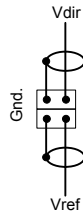
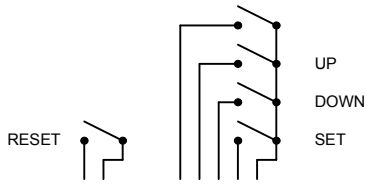
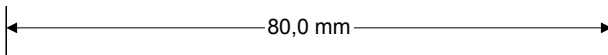
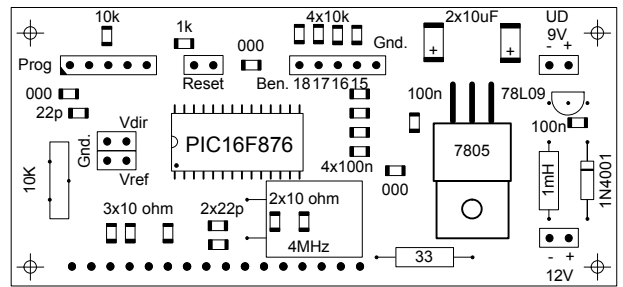
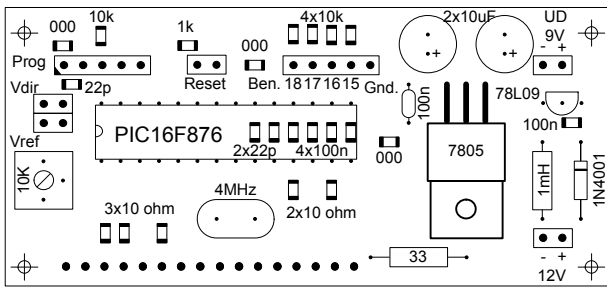
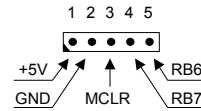


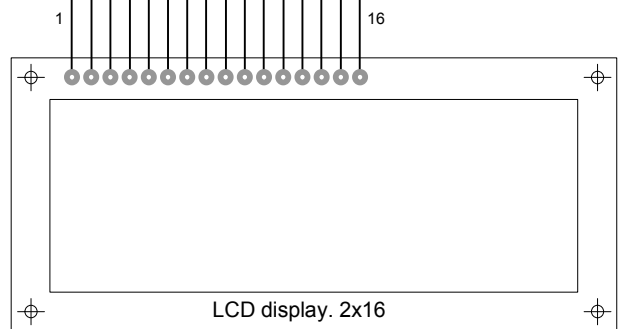
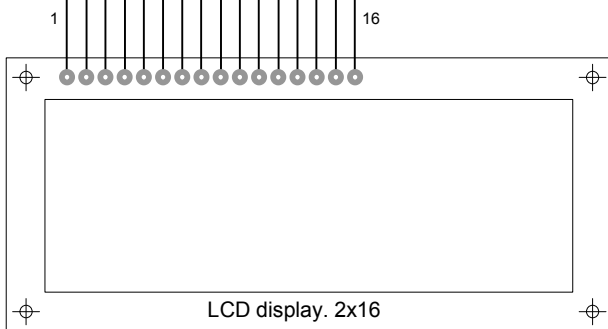
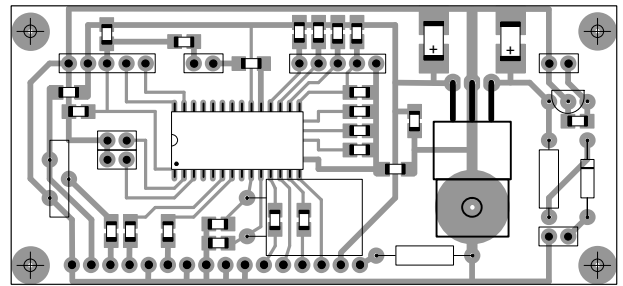
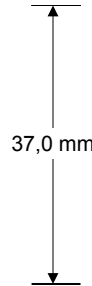
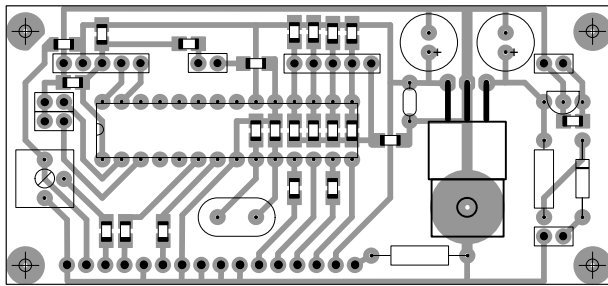
	LCD SWR - WATTmeter med PIC16F876.	Tegnet 07 04 2012.
		Rettet 21 04 2012.
		Af OZ1GID.



Programmering.

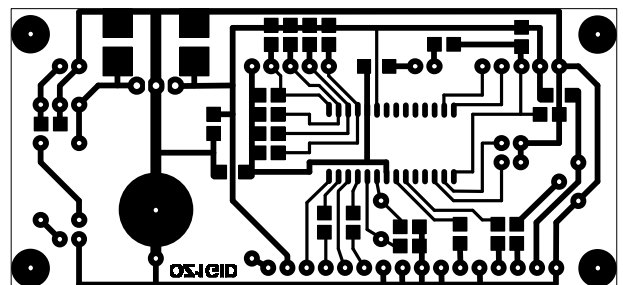
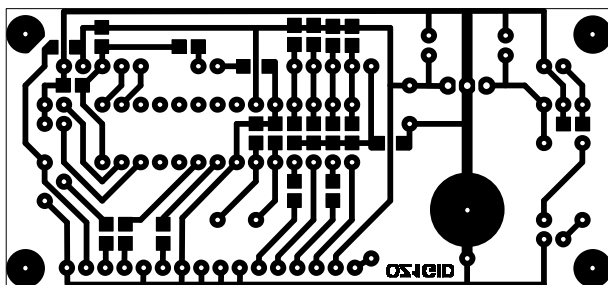


Xtallet monteres på bagsiden, mellem print og LCD display.

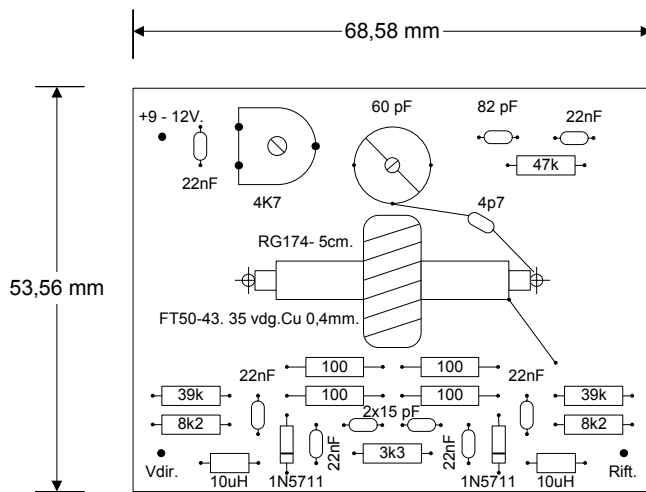


Printet er enkeltsidet.

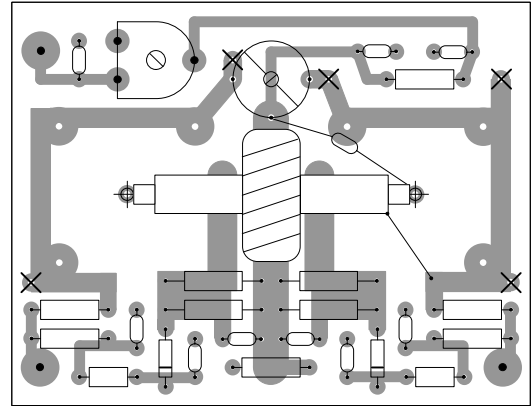
Printet er enkeltsidet.



	LCD SWR - WATTmeter med PIC16F876.	Tegnet 07 04 2012.
		Rettet 21 04 2012.
		Af OZ1GID.



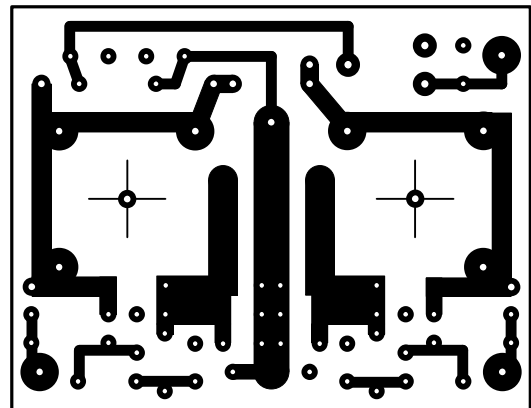
I hullerne med X føres et stykke trå, der loddes på både for og bagside.



Monteres i hvidbliksskabe fra DTM. Type 7764. 55x74x30 mm.

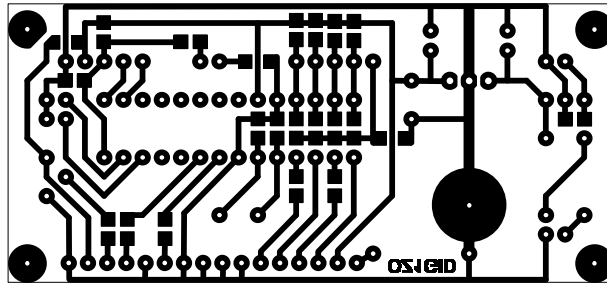
Printet er dobbeltsidet, bagsiden er ubrudt stelplan. Hullerne i stelplanet, der ikke skal loddes, undersænkes med et 3mm bor.

Schottky dioderne 1N5711, kan erstattes med HP 5082-2800. Kan købes hos DMT.

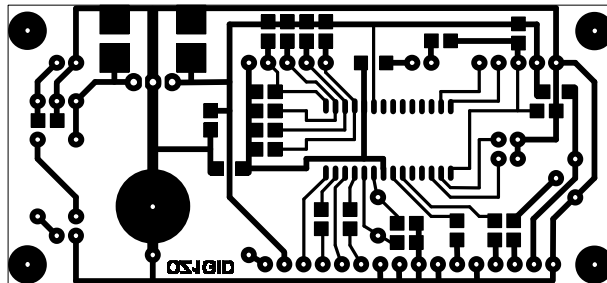


	LCD SWR - WATTmeter med PIC16F876.	Tegnet 07 04 2012.
	Printfilm.	Rettet 21 04 2012.
		Af OZ1GID.

Alm. + SMD. 1 sidet



SMD. 1 sidet



2 sidet

